

## C.15 LEVELING AND ALIGNING THE TOP

The top of the wall provides an excellent guidepost for measuring the success of your PolySteel installation. Below are two key steps you can take to ensure that the top of the wall represents the quality of the entire project.

### C.15.1 LEVEL THE TOP.

One of the best things you can do for the person who will be framing the interior walls of your project is to provide for a level top plate that matches the height of the walls to be constructed. This can be easily achieved by taking a few simple steps as you reach the top of the wall.

1. Confirm the desired plate height with the framer.
2. Do not initially glue the top course of forms. Set them in place at the top of the wall and snap a chalk line to mark the location that will achieve the plate height desired.
3. Number each form and remove it from the wall. Cut along the chalk line with a band saw, hand saw, or hot knife and then glue the form back in its place. The result will be a level wall, trimmed to provide the proper plate height.
4. Locate the vertical anchor bolt (or hurricane strap) locations in the top of the wall and mark the outside of the forms with a marking pen. Anchor bolts should be located in the thickest part of the concrete, where the vertical posts occur, and centered in the wall whenever possible. Check with local building codes for proper spacing.



SNAP A LINE TO MARK THE PLATE HEIGHT  
AND MARK FORMS FOR PLACEMENT

## C.15 LEVELING AND ALIGNING THE TOP

### C.15.2 ALIGNMENT.

The use of a top rail to align the top of your PolySteel wall has multiple benefits and is highly recommended. The rail system described below will:

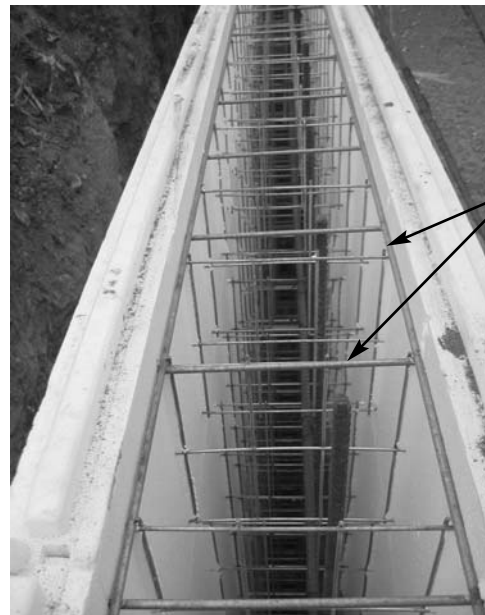
- ✓ Ensure that the top of the wall is straight from corner to corner.
- ✓ Reduce the amount of intermediate wall bracing required.
- ✓ Prevent “floating” of the forms during the concrete pour (Note: Gluing the forms together is the most common solution used to address this situation, however, the use of a top rail will also prevent this floating from occurring).
- ✓ Provide a solid and uniform surface for screeding the concrete at the top of the wall.

The recommended material for this top rail system is 1/8" x 2" x 2" steel angle, placed on both sides of the wall, as shown below, and secured with clips fabricated from the same material. The rail should be use in every location where there is a wall over 5 feet long, and the seams of the rail system should be staggered. Consult with your PolySteel representative for the rental, purchase, or fabrication of this valuable accessory.

*NOTE: You may also use a welded steel stay-in-place “In-Wall Brace” designed for the PS•4000 and available from your PolySteel Dealer. As illustrated below, this brace will eliminate the need for a top rail.*



STEEL TOP RAIL



IN -WALL BRACE

Remember, the ARC of Success starts with **Alignment**. Keeping this concept in mind through every step of the bracing and alignment process will help ensure that all your hard work will payoff in a professional looking project each and every time.